

8200 SERIES

Bathroom Accessories

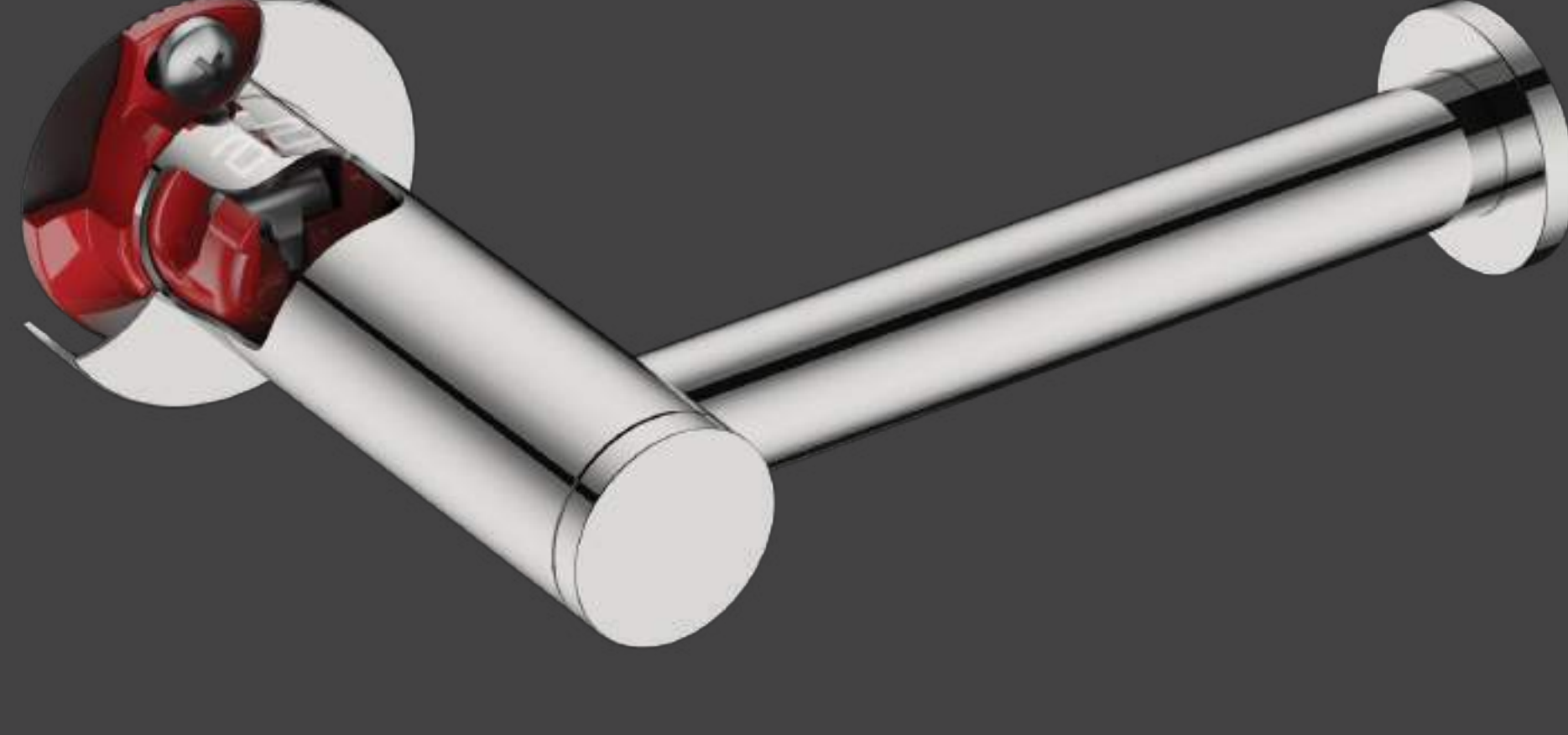


Discover beauty in every detail.

www.bathroombutler.com/za
011 334 8100 | info@bathroombutler.co.za

RIGID LOC – DESIGN MEETS INNOVATION

We have developed an innovative mounting system called RIGID Loc to ensure bathroom accessories don't come loose or wobble free on their mounting. (SA Patent 2012/05046)



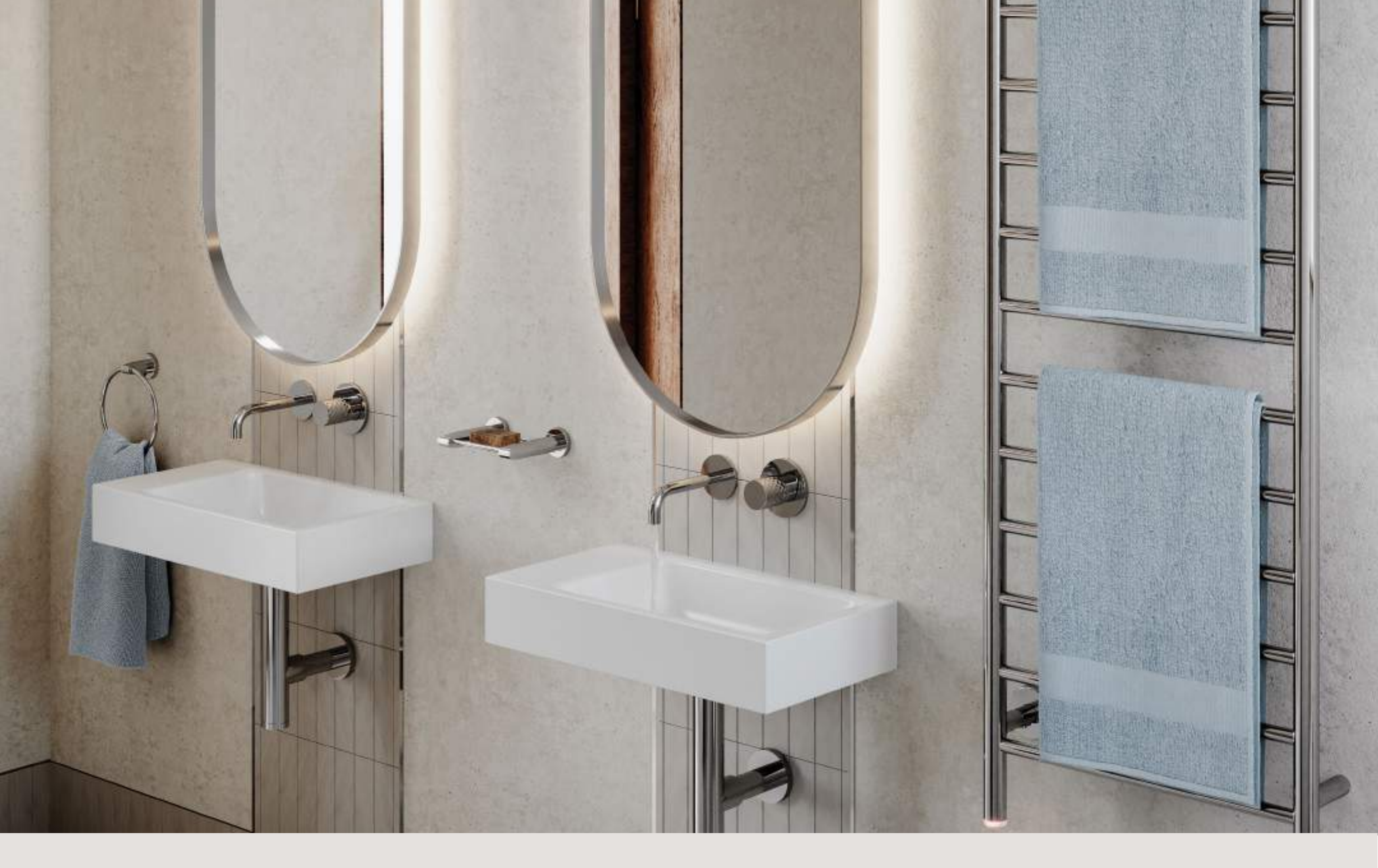
The Problem
Loose, wobbly bathroom accessories.



The Cause
Traditionally bathroom accessories were attached to the mounting using set screws, which had to be retightened regularly to keep the accessory in place.

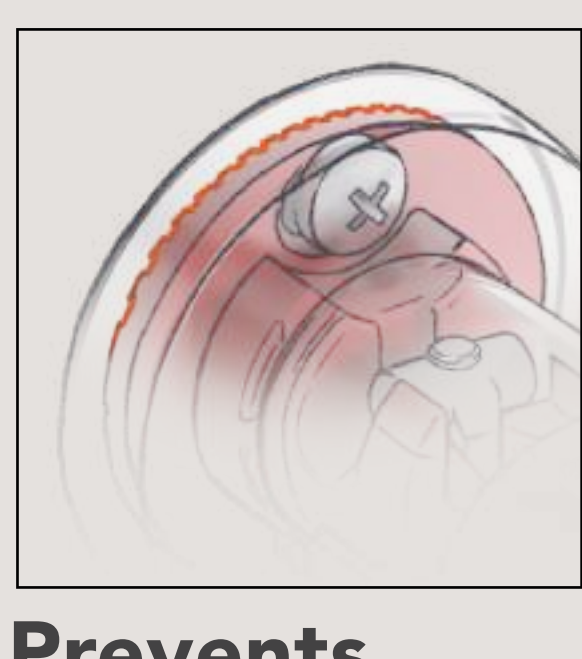


The Solution
Bathroom Butler bathroom accessories. We have developed an innovative mounting system called RIGID Loc to ensure bathroom accessories don't come loose or wobble free on their mounting.



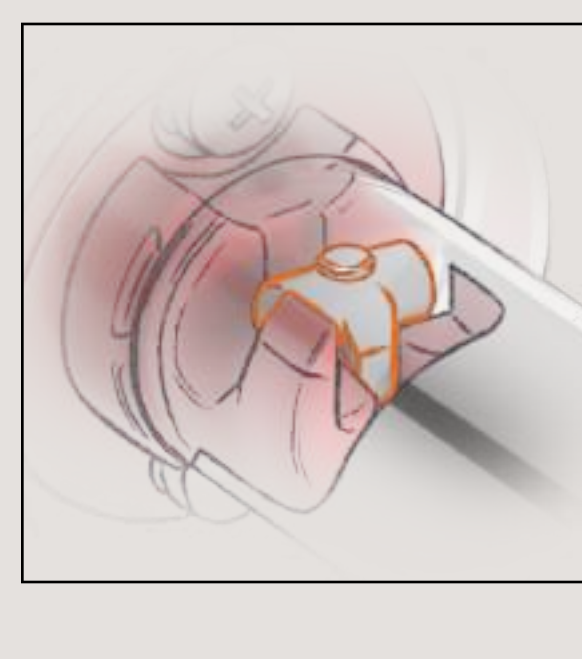
ENGINEERED DOWN TO THE FINEST DETAIL

Firmly secured to the mounting, the unique RIGID Loc mounting pulls the accessory firmly against the cover plate and locks it securely in place.



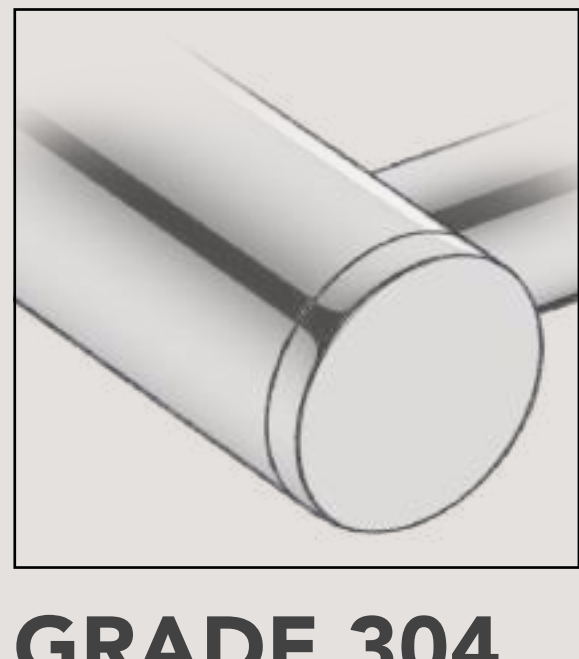
Prevents Movement

The gripping ribs along with the adhesive template help prevent movement even on ultra-smooth surfaces.



Secure Mount

As the screw tightens the t-barrel slides down the mounting locking the bathroom accessory securely in place.



GRADE 304 Stainless Steel

100% Recyclable, rust and flake free, durable and easy to maintain.

15 YEARS OF DESIGN INNOVATION

Established in South Africa, Bathroom Butler is a family owned business that has been manufacturing bathroom accessories for over 15 years. With our underlying passion for innovation, we are driven to constantly evolve to surpass market expectations and have been using smart materials such as GRADE 304 Stainless Steel in combination with sustainable design to produce top end heated towel rails and bathroom accessories that are as beautiful as they are functional.





Function, in perfect form
8200 SERIES

- RIGID LOC MOUNTING SYSTEM
- GRADE 304 STAINLESS STEEL
- 15 YEAR LIMITED GUARANTEE
- COLOUR OPTIONS

A luxurious element to the bathroom space with its uniquely tapered design. These tapered edges add a distinct style to the round design which is perfectly suited to a classic or contemporary bathroom, offering clean lines and an overall elegant finish.



Paper Holder Type 1
 Model: 8201 ●



Paper Holder Type 2
 Model: 8202 ●



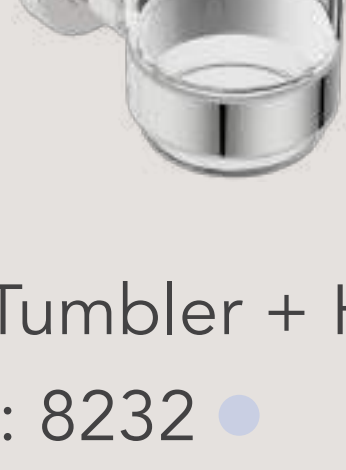
Paper Holder Type 2 + Flap
 Model: 8203 ●



Paper Holder Spare
 Model: 8204 ●



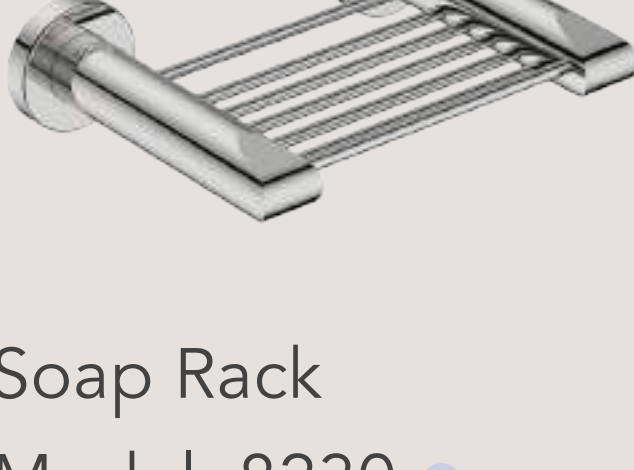
Toilet Brush + Holder
 Model: 8238 ●



Glass Tumbler + Holder
 Model: 8232 ●



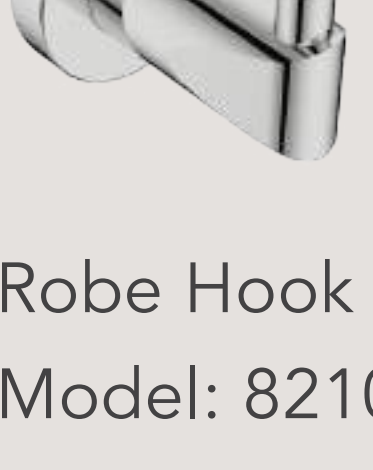
Glass Shelf 330mm
 Model: 8225 ●



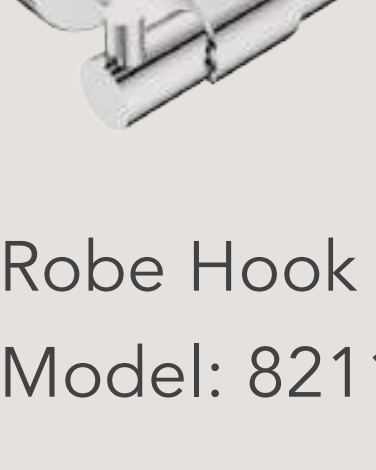
Soap Rack
 Model: 8230 ●



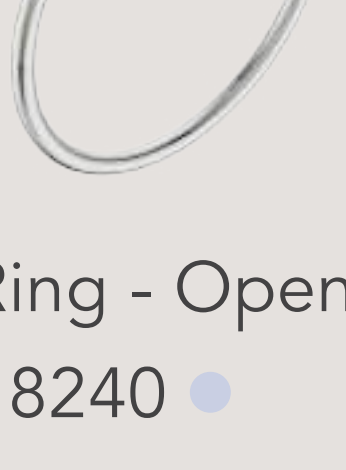
Shower Rack 330mm
 Model: 8220 ●



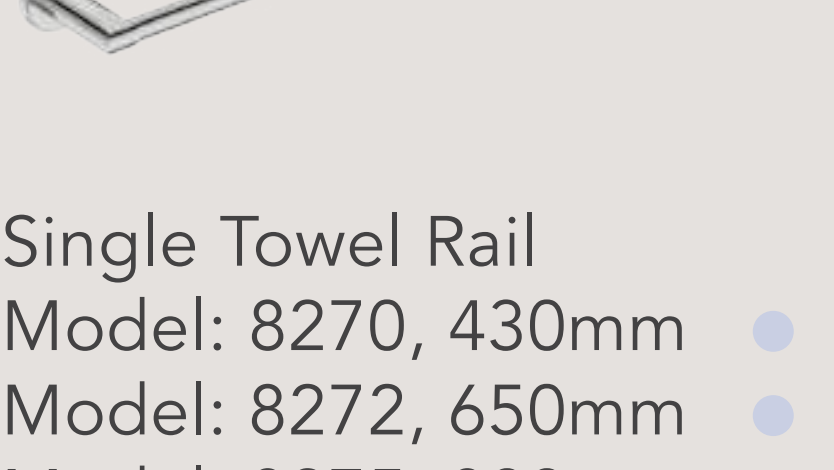
Robe Hook Single
 Model: 8210 ●



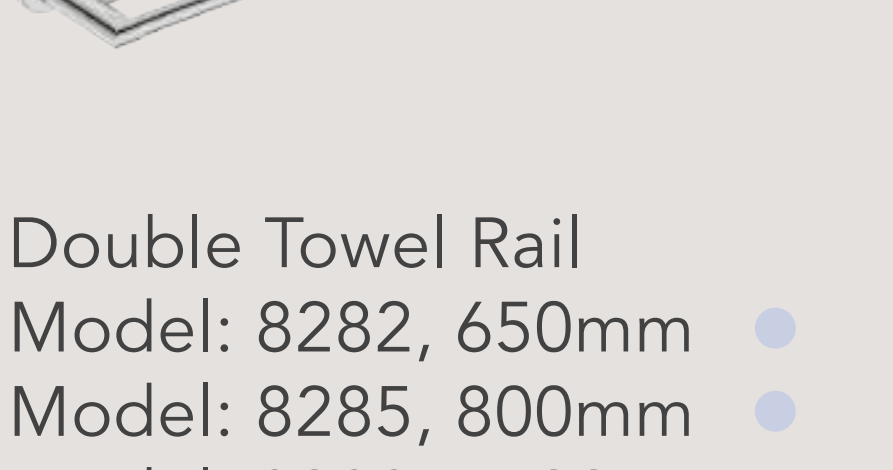
Robe Hook Double
 Model: 8211 ●



Towel Ring - Open
 Model: 8240 ●



Single Towel Rail
 Model: 8270, 430mm ●
 Model: 8272, 650mm ●
 Model: 8275, 800mm ●
 Model: 8278, 1100mm ●



Double Towel Rail
 Model: 8282, 650mm ●
 Model: 8285, 800mm ●
 Model: 8288, 1100mm ●

This range is available in a polished POLS finish. For colour options available in this range, refer to the colour discs below each item. Bathroom Butler reserves the right to alter and/or remove designs from time to time without prior notice.



Complete the look with...
HEATED TOWEL RAILS
NATURAL COLLECTION

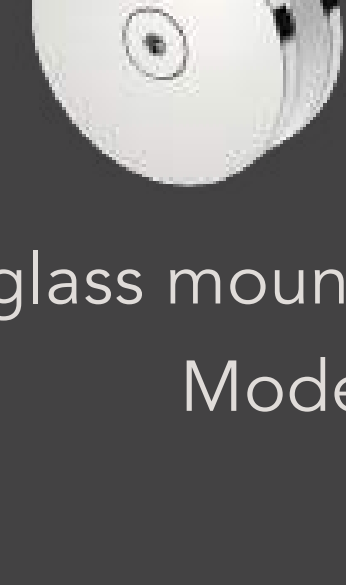


HYGIENICALLY DRY
 Bathroom Butler heated towel rails use Dry Element Technology or DET which ensures quicker heat up times, reaching optimum temperature within 10min. With the wattage of the average size heated rail being the same as a single light bulb, they don't cost much to run either.

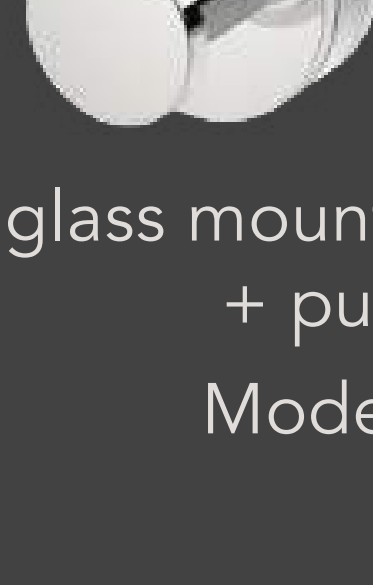
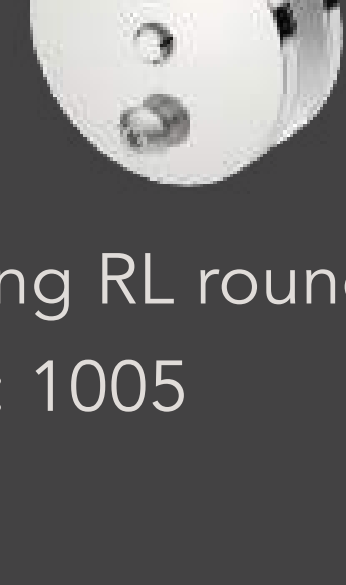


DESIGNED TO MAKE THE MOST OF GLASS

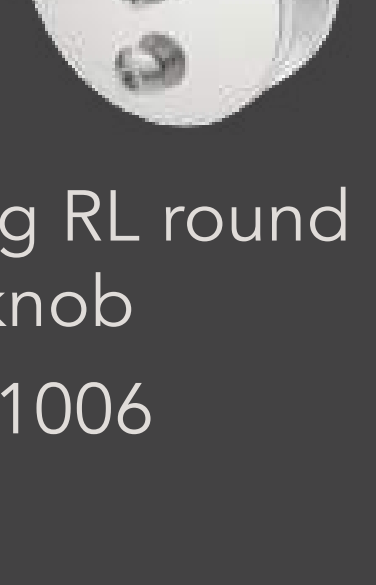
Secure and precise mountings for bathroom accessories on glass panels and shower doors.



glass mounting RL round
 Model: 1005



glass mounting RL round + pull knob
 Model: 1006



Glass Mountings are optional extras for bathroom accessories only and available in a polished POLS finish.

Every detail well considered. Our products are made from one of the finest grades Stainless Steel, combined with flawless design. Meticulous engineering and years of perfecting resulted in the most effective bathroom accessories imaginable turning your bathroom into a space worth showing off.



Made from **GRADE 304** Stainless Steel and hand polished to a mirror finish, our products will neither rust nor flake thanks to the inherent corrosion resistance properties of **GRADE 304** Stainless Steel.



No More Loose Accessories. With our unique **RIGID** Loc Mounting System our bathroom accessories remain securely fitted on the wall.



All our stainless steel bathroom accessories with the **RIGID** Loc mounting system are covered by a **15 Year Limited Guarantee** against manufacturing defects.



Smart materials



Smart design



Smart manufacturing

